



American Earth Anchors

americaneearthanchors.com

ANCHOR APPLICATIONS

Environmental Projects

Turf DISK

For erosion control

- Geotextiles • Erosion blankets
- Landscape fabric • Riverbanks
- Liners • Landfill covers
- Gabions • Straw bales



BULLET
3" anodized die-cast aluminum

Tough anchor for tough soils—fast, easy installation in all conditions, including compact or stony soils.



ARROWHEAD
3" galvanized steel

Fast, easy installation in most non-compact soils. Only 3" wide for minimum soil disturbance.



Turf DISK
3.5" HDPE with integral Quickvise

High-density polypropylene disk with slots for roots. Green color blends with environment.

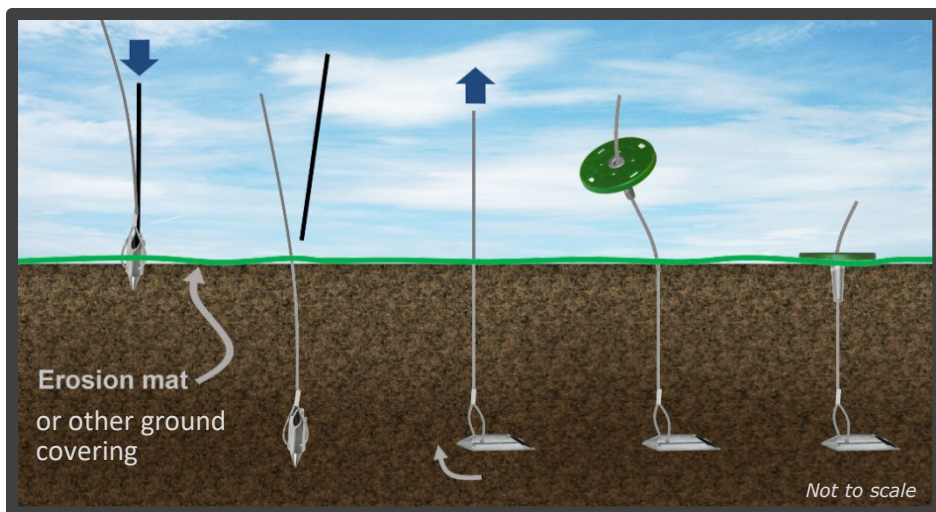
[Shop bullets and arrowheads](#)
or visit aeashop.com

Turf Disk is included as a termination option with the two anchors at left



Driving anchors into hillside using hammer drill

How they work



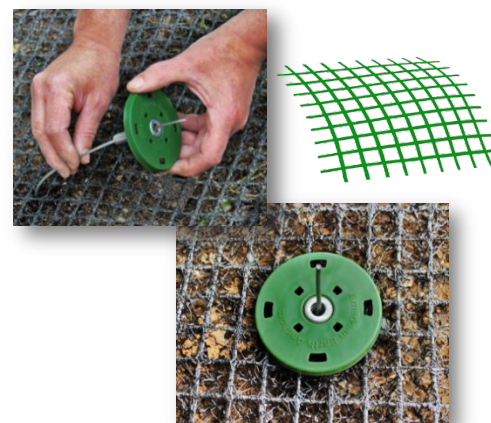
1
Drive in anchor using drive rod

2
Remove drive rod

3
Pull cable to lock anchor

4
Thread disk onto cable

5
Slide disk down cable—pull cable UP, push disk DOWN



[Watch the video](#)

or visit aeavideo.com



American Earth Anchors
info@americanea.com
americaneearthanchors.com

Contact us for CUSTOM WORK
Size, length, shape, material,
prototypes, cable assemblies



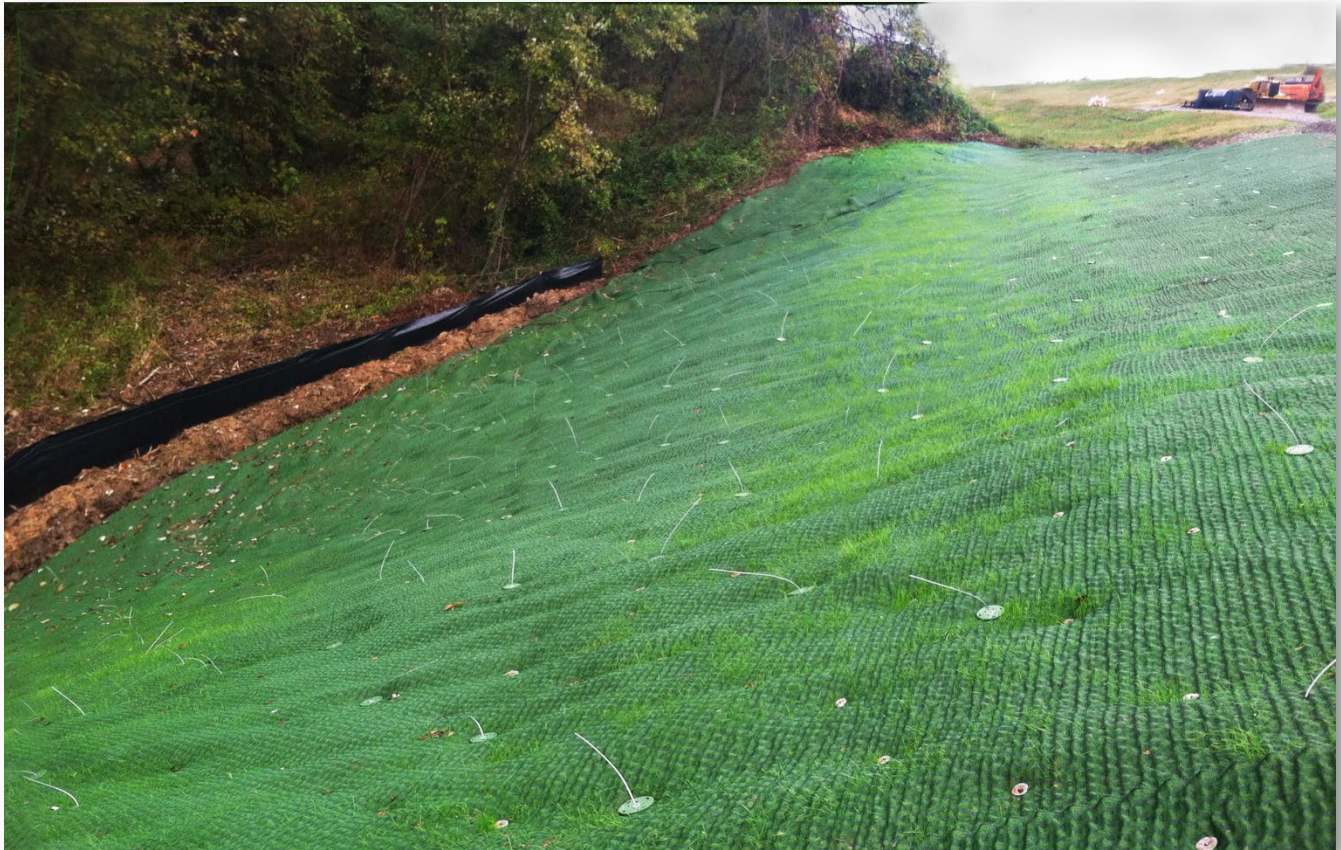
866-520-8511

+1 508-520-8511



Environmental Projects

TURF DISK (continued)

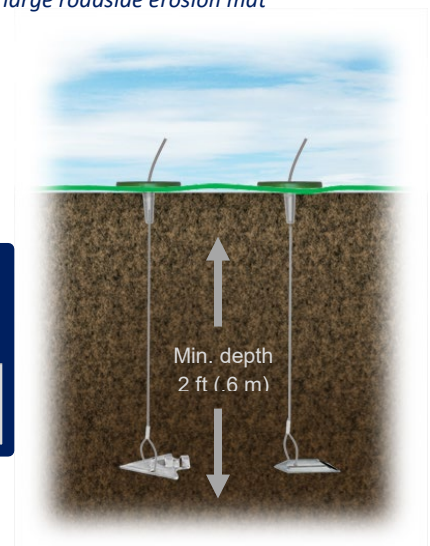


3" arrowheads with turf disks holding a large roadside erosion mat

LOAD CAPACITY (Pullout strength)
 3" bullet and 3" arrowhead — Minimum depth 2' (.6 m)

Hardpan or asphalt	Soil Class 1 Dense sand or gravel	Soil Class 2 Medium sandy gravel	Soil Class 3 Loose medium-to-fine sand	Soil Class 4 Loose fine uncompacted sand
1,100 lb 4.89 kN	1,100 lb 4.89 kN	1,100 lb 4.89 kN	600 lb 2.67 kN	350 lb 1.56 kN

Results from independent testing. Installed strength typically exceeds these specifications.



©2015 American Earth Anchors
 AA-Environmental May 2015



American Earth Anchors
 info@americanea.com
 americaneearthanchors.com

Contact us for CUSTOM WORK
 Size, length, shape, material,
 prototypes, cable assemblies

 **866-520-8511**
 **+1 508-520-8511**



PENETRATOR™ for environmental projects

Removable, reusable, strong cast-aluminum screw anchors

[Shop Penetrators](#)
or visit aeashop.com

Erosion mats — 9" Penetrator



Floating islands — 46" Penetrator

Manmade wetlands for natural water filtration



PE46Guy in the lake bottom with cable up to the "island"

Streams and banks — 26" Penetrator

For securing instrumentation and other water-environment items against washing away or floating out



Penetrator advantage for temporary installations: **REMOVABLE / REUSABLE**





ARROWHEAD for rivers and streams

Shop large (mil-spec) arrowheads
or visit aeashop.com

RIVERBANK STABILIZATION — Arrowheads securing cable wrapped around
downed trees

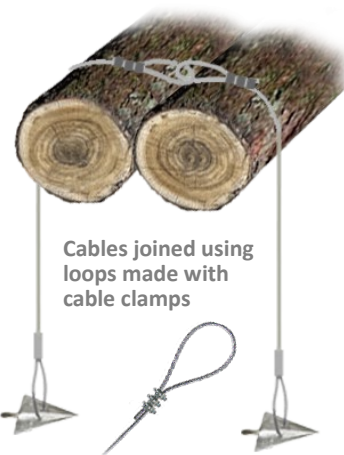


6" aluminum
arrowhead (mil-spec)

WALKWAY HOLD-DOWN — Arrowheads holding down the walkway's horizontal
support logs to prevent float-out during high water



8" aluminum
arrowhead (mil-spec)



Cables joined using
loops made with
cable clamps





LOAD CAPACITY (Pullout strength)

Results from independent testing. Installed strength typically exceeds these specifications.

Type of soil ↓	4" Mil-spec Arrowhead Min. depth 2.5' (.8 m)	6" Mil-spec Arrowhead Min. depth 3.5' (1 m)	8" Mil-spec Arrowhead Min. depth 4' (1.2 m)	10" Mil-spec Arrowhead Min. depth 5' (1.5 m)
Hardpan or asphalt	3,500 lb 15.6 kN	5,000 lb 22.2 kN	9,000 lb 40.0 kN	14,000 lb 62.3 kN
SOIL CLASS 1 Dense sand or gravel	2,200 lb 9.79 kN	3,000 lb 13.3 kN	6,500 lb 28.9 kN	11,000 lb 48.9 kN
SOIL CLASS 2 Medium sandy gravel	1,900 lb 8.45 kN	2,000 lb 8.90 kN	3,500 lb 15.6 kN	7,000 lb 31.1 kN
SOIL CLASS 3 Loose medium-to-fine sand	900 lb 4.00 kN	1,200 lb 5.34 kN	2,200 lb 9.79 kN	4,000 lb 17.8 kN
SOIL CLASS 4 Loose fine un-compacted sand	475 lb 2.11 kN	600 lb 2.67 kN	1,250 lb 5.56 kN	2,400 lb 10.7 kN

Mil-spec arrowheads are military specification MIL-A-3962E, 356 aluminum alloy heat-treated to T6 specification

Pullout strength when arrowhead is driven to AT LEAST the minimum depth shown above

Type of soil ↓	9" Penetrator	10" Penetrator	18" Penetrator	26" Penetrator	46" Penetrator
Hardpan or asphalt	400 lb 1.78 kN	1,000 lb 4.45 kN	2,500 lb 11.1 kN	4,500 lb 20.0 kN	14,000 lb 62.3 kN
SOIL CLASS 1 Dense sand or gravel	200 lb 0.89 kN	700 lb 3.11 kN	1,700 lb 7.56 kN	3,100 lb 13.8 kN	9,500 lb 42.3 kN
SOIL CLASS 2 Medium sandy gravel	100 lb 0.44 kN	350 lb 1.56 kN	600 lb 2.67 kN	1,100 lb 4.89 kN	3,300 lb 14.7 kN
SOIL CLASS 3 Loose medium-to-fine sand	Less than 100 lb 0.44 kN	200 lb 0.89 kN	350 lb 1.56 kN	630 lb 2.80 kN	2,000 lb 8.90 kN
SOIL CLASS 4 Loose fine un-compacted sand	Less than 100 lb 0.44 kN	100 lb 0.44 kN	200 lb 0.89 kN	360 lb 1.60 kN	1,100 lb 4.89 kN

Vertical pullout strength with screw's flight fully embedded

